

Operating Instructions

Housing Installation

An arrow marked on filter head indicates direction of flow through the filter, **DO NOT** install filter backwards. Install filter vertically with pipe connections at the top. It is better to install upstream and downstream valves for filter cartridge replacement.

Filter Cartridge Installation

1. Unscrew ring nut. Remove the sump.
2. Slide the cartridge onto the pedestal in the sump. Lubricate head o-ring if necessary.
3. Reassemble sump to head.
4. Tighten ring nut.

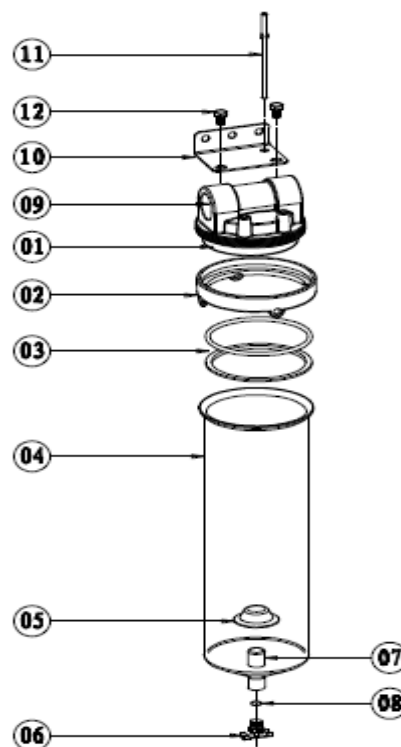
Starting Operation

1. Start up - all valves closed.
2. Slowly open inlet valve to fill filter.
3. Check for leaks (drain plug - o-rings - connections). If filter leaks, shut off inlet valve. Then empty the housing. Check for faulty pieces and replace if necessary. Repeat operation.
4. When there are no leaks when filter is under pressure, open outlet valve. Then open inlet valve fully. Filter is now in operation.

Filter Cartridge Replacement

1. Shut off outlet valve, then inlet valve.
2. Empty the filter.
3. Disassemble the filter as indicated above.
4. Remove expended cartridge.
5. Clean all parts. Check cylinder o-rings. Replace them if they are damaged or deteriorated.
6. Install new cartridge.
7. Repeat starting operation as above.

Cartridge Identification



Spare Parts

Consult General Filtration for ordering spare parts.

* Integral with Shell (Item No. 4)

The cartridge identification is indicated on the filter cartridge packaging.
This identification should be used for cartridge replacement orders.

No.	Description	Qty.
01	Cap	1
02	Retainer Ring	1
03	O-ring	2
04	Shell	1
05	Pedestal *	1
06	Screw	1
07	Spring *	1
08	O-ring	1
09	Port (Inlet)	1
10	Mounting Bracket	1
11	Wrench	1
12	Hexagon Screw	2